

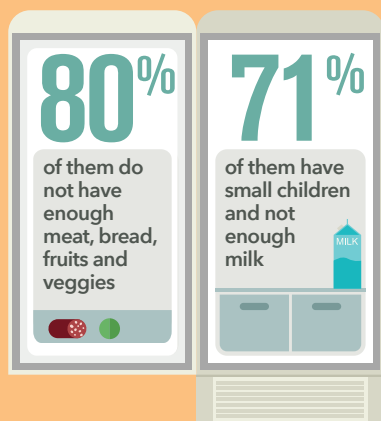
— Wasted Food is — WASTED POTENTIAL

FOR OUR KIDS, FOR OUR ECONOMY, FOR OUR ENVIRONMENT

Hunger hurts everyone, but it's especially devastating to children. Getting enough nutritious food is critical to children's physical and emotional development and their ability to excel academically. When we combat child hunger and provide nutrition, we cultivate children's potential, and help them to become tomorrow's leaders and innovators who positively shape the Valley's future.

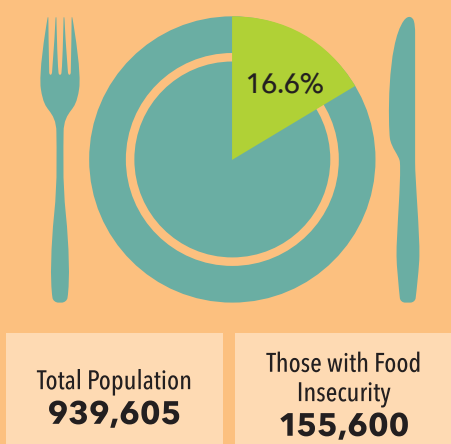
— Did You Know? Facts About Fresno's Hunger —

**MORE THAN
64,000 PEOPLE**
in Fresno have empty
refrigerators every month



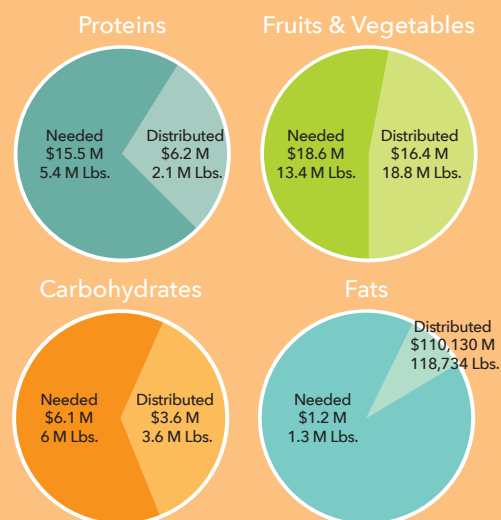
2014 Fresno Hunger Count

**16.6% FOOD
INSECURITY**
Among Fresno County Residents



2013 Feeding America Map the Meal Gap Fresno County

26 MILLION POUNDS OF FOOD
are needed this year in Fresno County



2014 Fresno Hunger Count

— Positive Changes Can Be Made Right Now —

WE NEED TO ENCOURAGE AND SUSTAIN AN INTEGRATED FOOD SYSTEM NETWORK.

Food waste occurs at all stages of the food system with significant opportunities for food recovery and waste diversion at each stage.

UP TO 40% OF FOOD IS WASTED

That is grown,
processed and
transported in the U.S.

2012 BSR Food Waste Assessment



A simplified path for program participants to make multiple connections, build relationships, and participate in community service programs dedicated to feeding the hungry and reducing greenhouse gas emissions. Partners share three common goals, and work together to improve the system's communication, collection methods and sharing network.

Goal #1

Increase the amount of safe, nutritious food donated to those in need

Goal #2

Reduce the amount of food waste generated

Goal #3

Recycle unavoidable food waste, diverting it from landfills



— How It Will Work —

We're all doing our best to share what we have with others less fortunate. But it's no secret that the current system could be more efficient at securing, transporting and delivering food to those who need it faster and with less time demands made on everyone. And when food can't be eaten, there are ways to repurpose most of it into animal feed and renewable energy instead of sending it to our burgeoning landfills. You can help re-shape the growing network of donors, providers and recipients to ensure our community and local economy thrives and we reduce our emissions impact substantially.

1. COLLECT

The Network provides access to wholesome nutritious foods by collecting edible food from:

- Growers and Packers
- Gleanings (crop remnants)
- Farmers Markets
- Food Service Facilities
- Restaurants
- Supermarkets
- Food Distributors
- Hospitals
- Institutional Cafeterias
- Food Institutions

PARTNER PORTAL

FOOD
SYSTEM
NETWORK
EXCHANGE
WEBSITE

2. SHARE

And sharing food with:

- Churches
- Community Food Kitchens
- Pantries
- Community Distribution Centers
- Community Centers
- Neighborhood Schools
- Partnership to Improve Community Health - PICH

3. DIVERT WASTE

The network supports Colony Energy Partners and Caglia Environmental for diverting ag and green waste along with inedible food away from landfills and into production of low carbon renewable energy systems.

CAGLIA
ENVIRONMENTAL
COLLECTION • RECYCLING • TRANSFER • LANDFILL MANAGEMENT

CalRecycle

COLONY
ENERGY
PARTNERS

— Help Shape A New Network —

TO RECOVER FOOD AND REDUCE WASTE!

The Food to Share Partnership Network offers many different ways for our community to come together to fight hunger, reduce environmental impact and build a stronger economy.



Donate food, make a financial contribution, volunteer, or attend our workshops to help shape and strengthen the systems in place.

▶▶▶▶ To learn more please visit www.fresnometmin.org/programs or call

559-485-1416

◀◀◀◀

THE BENNETT FAMILY
FOUNDATION FUND
at
Central Valley
COMMUNITY
FOUNDATION
Formerly the Fresno Regional Foundation
Effective Philanthropy.
Stronger Communities.

FRESNO
HUNGER COUNT

Local
Government
Commission

Food to
Share

FRESNO METRO MINISTRY

FOOD
RECOVERY
NETWORK
FRESNO STATE CHAPTER

RCI
REGENERATE CALIFORNIA INNOVATION

Community
FOOD
BANK
A Member of
FEEDING AMERICA

JUDY CORBETT
CONSULTANT